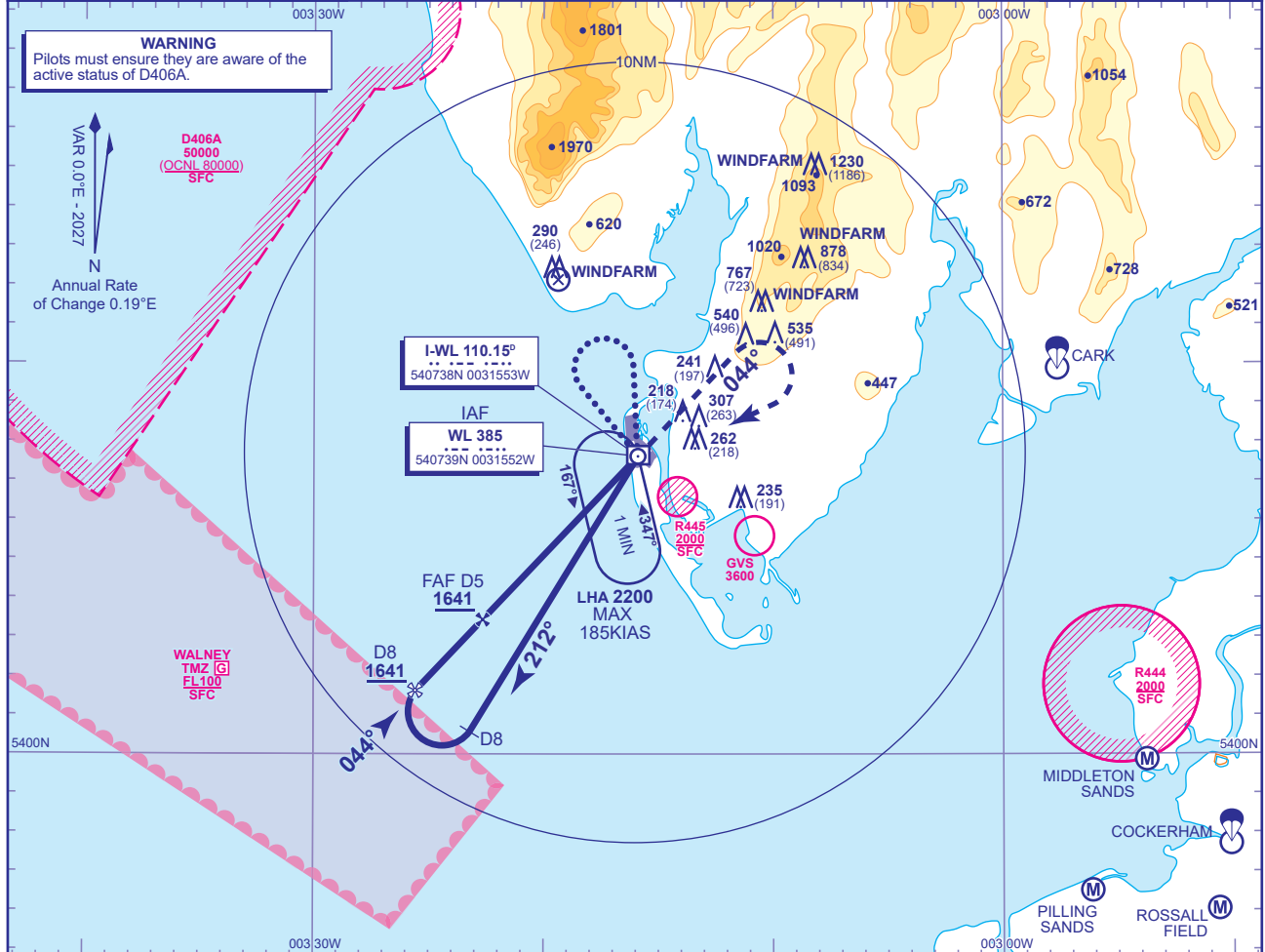
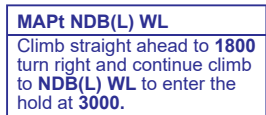


**WALNEY
NDB(L)/DME
TO AERODROME
(ACFT CAT B)**



DME I-WL	5	4	3	2
ALT(HGT)	1641(1597)	1328(1284)	1014(970)	701(657)



BASE TURN PROCEDURE AFTER HOLDING From overhead NDB(L) WL **not below 2300** fly outbound on NDB(L) WL QDR 321° for 1 MIN. Baseturn right and manoeuvre onto NDB(L) WL QDM 178° to overhead NDB(L) WL. Turn right outbound on NDB(L) WL QDR 212°M descending **not below 1641**. At I-WL DME 8 baseturn right to intercept extended FAT, continue as for main procedure.

NOTE Use of this procedure is strictly PPR from the aerodrome operator.

AERO INFO DATE 07 AUG 25

AD 2-EGNL-8-6